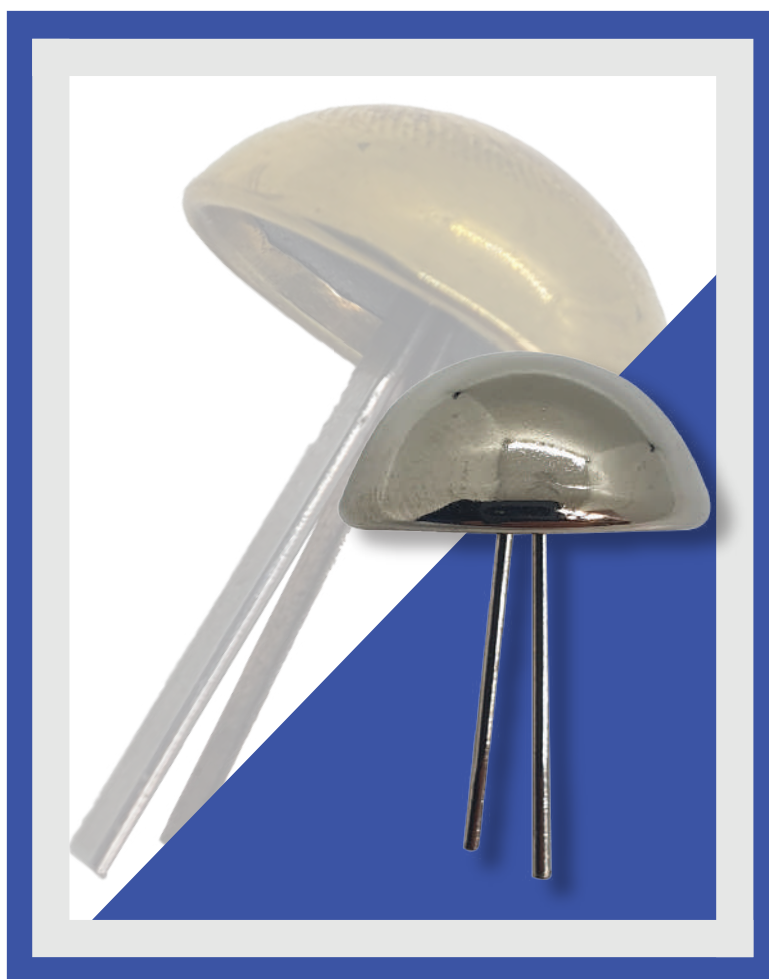
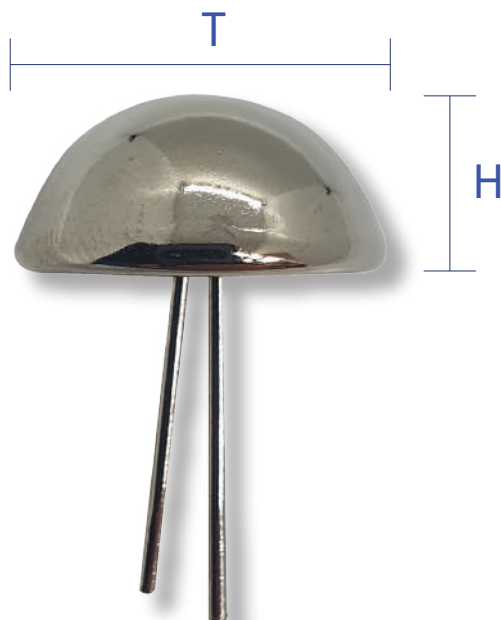


# BORCHIE A SFERA



# BORCHIE A SFERA



	MATERIALE	T (mm)	H (mm)
BORCHIA 316	OTTONE/FERRO	16	7
BORCHIA 320	OTTONE/FERRO	20	10
BORCHIA 324	OTTONE/FERRO	24	10

BORCHIA 18 / 3 PUNTE	FERRO	18	9.30
----------------------	-------	----	------

