

**OCCHIELLI OVALI  
 TESTA PIATTA**



**OVAL AND FLAT HEAD  
 EYELETS**

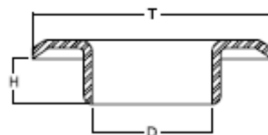
**ŒILLETS OVAL , TÊTE  
 PLATTE**



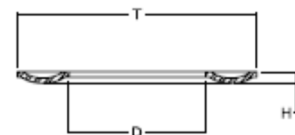
Edizione 2020

Composizione articoli / item composition

1.0	Occhiello + rondella / Eyelet + washer Oeillet + Rondella (OC+RA)
2.1	Occhiello / eyelet / Oeillet (OC)
2.2	Rondella / washer / Rondelle (RA)



2.1



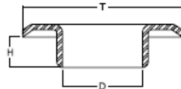
2.2

**DIMENSIONI / SIZES / DIMENSIONS:** mm

**PESO / WEIGHT / POIDS:** gr / 1000 pcs ("W" indica il peso nominale, il peso reale può essere differente / "W" stays for the standard weight; the real weight can be different / «W» indique le poids nominal, le poids réel peut être différent.

**MATERIALE / MATERIAL / MATERIAL:** Ottone - brass - laiton (Pb < 90ppm)

## OCCHIELLI OVALI TP – OVAL EYELETS TP – OEILLETTS OVALE TP



1.0 Occhiello + rondella / Eyelet + washer /  
 Oeillet + rondelle (OC+RA)

2.1 Occhiello / eyelet / oeillet (OC)

2.2 Rondella / Washer / Rondelle (RA)

		D (mm)	T (mm)	H (mm)	W (g)	COD.	Note
1.0	OC+RA 6610/13TP H4				750	OVOP13190430	
2.1	OCCH. 6610/13TP H4	12,9X3,1	19X9,2	4,0	550	OOOP13190430	
2.2	RAN. 6610/13	14,3X4,5	18X8	0,8	200	ORAO14180830	

		D (mm)	T (mm)	H (mm)	W (g)	COD.	Note
1.0	OC+RA 6610/13TP H6				800	OVOP13190530	
2.1	OCCH. 6610/13TP H6	12,9X3,1	19X9,2	5,0	600	OOOP13190530	
2.2	RAN. 6610/13	14,3X4,5	18X8	0,8	200	ORAO14180830	

		D (mm)	T (mm)	H (mm)	W (g)	COD.	Note
1.0	OC+RA 6610/17TP H4				1000	OVOP17250430	
2.1	OCCH. 6610/17TP H4	17,6X4,8	24,7X12	4,0	700	OOOP17250430	
2.2	RAN. 6610/17	19X6	23X10	0,8	300	ORAO19230730	

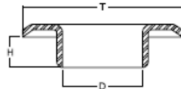
		D (mm)	T (mm)	H (mm)	W (g)	COD.	Note
1.0	OC+RA 6610/17TP H6				1100	OVOP17250530	
2.1	OCCH. 6610/17TP H6	17,6X4,8	24,7X12	5,0	800	OOOP17250530	
2.2	RAN. 6610/17	19X6	23X10	0,8	300	ORAO19230730	

		D (mm)	T (mm)	H (mm)	W (g)	COD.	Note
1.0	OC+RA 6610/19TP H4				1100	OVOP19250430	
2.1	OCCH. 6610/19TP H4	19,5X5,2	26,5X12	4,0	750	OOOP19250430	
2.2	RAN. 6610/19	19X6	23X10	0,8	350	ORAO21250730	

		D (mm)	T (mm)	H (mm)	W (g)	COD.	Note
1.0	OC+RA 6610/19TP H6				1250	OVOP19250530	
2.1	OCCH. 6610/19TP H6	19,5X5,2	26,5X12	5,0	900	OOOP19250530	
2.2	RAN. 6610/19	19X6	23X10	0,8	350	ORAO21250730	

		D (mm)	T (mm)	H (mm)	W (g)	COD.	Note
1.0	OC+RA 6610/22TP H4				1320	OVOP23300430	
2.1	OCCH. 6610/22TP H4	22,9X5,2	29,8X12	4,0	900	OOOP23300430	
2.2	RAN. 6610/22	24X6,2	28X12	0,8	420	ORAO24280830	

## OCCHIELLI OVALI TP – OVAL EYELETS TP – OEILLETTS OVALE TP



1.0 Occhiello + rondella / Eyelet + washer /  
 Oeillet + rondelle (OC+RA)

2.1 Occhiello / eyelet / oeillet (OC)

2.2 Rondella / Washer / Rondelle (RA)

		D (mm)	T (mm)	H (mm)	W (g)	COD.	Note
1.0	OC+RA 6610/22TP H6				1520	OVOP23300530	
2.1	OCCH. 6610/22TP H6	22,9X5,2	29,8X12	5,0	1100	OOOP23300530	
2.2	RAN. 6610/22	24X6,2	28X12	0,8	420	ORAO24280830	

		D (mm)	T (mm)	H (mm)	W (g)	COD.	Note
1.0	OC+RA 6610/25TP H4				1820	OVOP25330430	
2.1	OCCH. 6610/25TP H4	25,4X5,3	33X12	4,0	1350	OOOP25330430	
2.2	RAN. 6610/25	26,8X6,1	31X10,3	0,8	470	ORAO27310830	

		D (mm)	T (mm)	H (mm)	W (g)	COD.	Note
1.0	OC+RA 6610/25TP H6				1820	OVOP25330530	
2.1	OCCH. 6610/25TP H6	25,4X5,3	33X12	5,0	1350	OOOP25330530	
2.2	RAN. 6610/25	26,8X6,1	31X10,3	0,8	470	ORAO27310830	

		D (mm)	T (mm)	H (mm)	W (g)	COD.	Note
1.0	OC+RA 6610/30TP H4				2500	OVOP30390430	
2.1	OCCH. 6610/30TP H4	30,1X5,4	39X13,6	4,0	1300	OOOP30390430	
2.2	RAN. 6610/30	32X39,6	39X13,6	0,8	1200	ORAO32400830	

		D (mm)	T (mm)	H (mm)	W (g)	COD.	Note
1.0	OC+RA 6610/30TP H6				3000	OVOP30390530	
2.1	OCCH. 6610/30TP H6	30,1X5,4	39X13,6	5,0	1800	OOOP30390530	
2.2	RAN. 6610/30	32X39,6	39X13,6	0,8	1200	ORAO32400830	

		D (mm)	T (mm)	H (mm)	W (g)	COD.	Note
1.0	OC+RA 6610/40TP H4				3500	OVOP41500430	
2.1	OCCH. 6610/40TP H4	40,7X7,4	50X16	4,0	2000	OOOP41500430	
2.2	RAN. 6610/40	42X9	50X16,2	1,1	1500	ORAO42500840	

		D (mm)	T (mm)	H (mm)	W (g)	COD.	Note
1.0	OC+RA 6610/40TP H6				4000	OVOP41500630	
2.1	OCCH. 6610/40TP H6	40,7X7,4	50X16	5,0	2500	OOOP41500630	
2.2	RAN. 6610/40	42X9	50X16,2	1,1	1500	ORAO42500840	