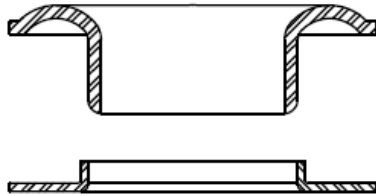


**OCCHIELLI STANDARD
 FERRO
 (MONTAGGIO AUTOMATICO)**

**STANDARD IRON
 EYELETS
 (AUTOMATIC ASSEMBLY)**

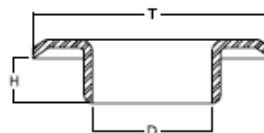
**OUILLETS EN FER
 STANDARD
 (MONTAGE AUTOMATIQUE)**



Edizione 2020

Composizione articoli / item composition

1.0	Occhiello + rondella / Eyelet + washer Oeillet + Rondella (OC+RA)
2.1	Occhiello / eyelet / Oeillet (OC)
2.2	Rondella / washer / Rondelle (RA)



2.1



2.2

DIMENSIONI / SIZES / DIMENSIONS: mm

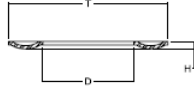
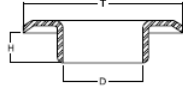
PESO / WEIGHT / POIDS: gr / 1000 pcs ("W" indica il peso nominale, il peso reale può essere differente / "W" stays for the standard weight; the real weight can be different / «W» indique le poids nominal, le poids réel peut être différent.

MATERIALE / MATERIAL / MATERIAL: Ferro - steel - acier

**OCCHIELLI STANDARD
 FERRO
 (MONTAGGIO AUTOMATICO)**

**STANDARD IRON
 EYELETS
 (AUTOMATIC ASSEMBLY)**

**OUILLETS EN FER
 STANDARD
 (MONTAGE AUTOMATIQUE)**



- 1.0 Occhiello + rondella / Eyelet + washer / Oeillet + rondelle (OC+RA)
- 2.1 Occhiello / eyelet / oeillet (OC)
- 2.2 Rondella / Washer / Rondelle (RA)

		D (mm)	T (mm)	H (mm)	W (g)	COD.	Note
1.0	OC+RA MHS VL40				1100	FVSA10180630	
2.1	OC VL40	9,8	17,6	4,7	650	FOCS10180630	
2.2	RA R40 MHS	11,7	17,8	2,1	450	FRAA12182130	

		D (mm)	T (mm)	H (mm)	W (g)	COD.	Note
1.0	OC+RA MHS VL40GL H7				1380	FVSA10180830	
2.1	OC VL40GL H7	9,8	17,6	6,4	930	FOCS10180830	
2.2	RA R40 MHS	11,7	17,8	2,1	450	FRAA12182130	

		D (mm)	T (mm)	H (mm)	W (g)	COD.	Note
1.0	OC+RA MHS VL40GLL H9				1670	FVSA10181030	
2.1	OC VL40GLL H9	9,8	17,6	8,3	1220	FOCS10181030	
2.2	RA R40 MHS	11,7	17,8	2,1	450	FRAA12182130	

		D (mm)	T (mm)	H (mm)	W (g)	COD.	Note
1.0	OC+RA MHS VL50				1550	FVSA12220830	
2.1	OC VL50	12,4	21,6	6,0	960	FOCS12220830	
2.2	RA R50 MHS	11,7	17,8	2,0	590	FRAA15222030	

		D (mm)	T (mm)	H (mm)	W (g)	COD.	Note
1.0	OC+RA MHS VL60				2250	FVSA13040730	
2.1	OC VL60	14,1	23,5	6,4	1300	FOCS13040730	
2.2	RA R60 MHS	17,1	23,9	2,1	950	FRAA17242140	