

**OCCHIELLI STANDARD  
 FERRO**



**STANDARD EYELETS  
 STEEL**



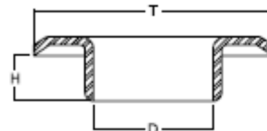
**OUILLETS STANDARD  
 ACIER**



Edizione 2020

Composizione articoli / item composition

1.0	Occhiello + rondella / Eyelet + washer Oeillet + Rondella (OC+RA)
2.1	Occhiello / eyelet / Oeillet (OC)
2.2	Rondella / washer / Rondelle (RA)



2.1



2.2

**DIMENSIONI / SIZES / DIMENSIONS:** mm

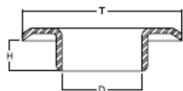
**PESO / WEIGHT / POIDS:** gr / 1000 pcs ("W" indica il peso nominale, il peso reale può essere differente / "W" stays for the standard weight; the real weight can be different / «W» indique le poids nominal, le poids réel peut être différent.

**MATERIALE / MATERIAL / MATERIAL:** Ferro - steel - acier

**OCCHIELLI STANDARD  
FERRO**



**STANDARD EYELETS  
STEEL**



**OEILLETS STANDARD  
ACIER**

- 1.0 Occhiello + rondella / Eyelet + washer / Oeillet + rondelle (OC+RA)
- 2.1 Occhiello / eyelet / oeillet (OC)
- 2.2 Rondella / Washer / Rondelle (RA)

		D (mm)	T (mm)	H (mm)	W (g)	COD.	Note
1.0	OC+RA VL1100				200	FOCS04080525	
2.1	OC VL1100	4,0	7,5	4,0	150	FOCS04080525	
2.2	RA R1100	4,5	7,5	0,7	50	FRAN05080725	

		D (mm)	T (mm)	H (mm)	W (g)	COD.	Note
1.0	OC+RA VL1100GL-1/2				210	FOCS04080625	
2.1	OC VL1100GL-1/2	4,0	7,5	4,5	160	FOCS04080625	
2.2	RA R1100	4,5	7,5	0,7	50	FRAN05080725	

		D (mm)	T (mm)	H (mm)	W (g)	COD.	Note
1.0	OC+RA VL1100GLL-3/4				220	FOCS04080725	
2.1	OC VL1100GLL-3/4	4,0	7,5	5,0	170	FOCS04080725	
2.2	RA R1100	4,5	7,5	0,7	50	FRAN05080725	

		D (mm)	T (mm)	H (mm)	W (g)	COD.	Note
1.0	OC+RA VL1130GC 1/4				300	FOCS05100425	
2.1	OC VL1130GC -1/4	5,0	9,5	3,0	200	FOCS05100425	
2.2	RA R1130	5,8	9,5	0,8	100	FRAN06100825	

		D (mm)	T (mm)	H (mm)	W (g)	COD.	Note
1.0	OC+RA VL1130				320	FOCS05100525	
2.1	OC VL1130	5,0	9,5	4,5	220	FOCS05100525	
2.2	RA R1130	5,8	9,5	0,8	100	FRAN06100825	

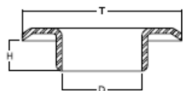
		D (mm)	T (mm)	H (mm)	W (g)	COD.	Note
1.0	OC+RA VL1130GL -1/2				350	FOCS05100625	
2.1	OC VL1130GL -1/2	5,0	9,5	5,2	250	FOCS05100625	
2.2	RA R1130	5,8	9,5	0,8	100	FRAN06100825	

		D (mm)	T (mm)	H (mm)	W (g)	COD.	Note
1.0	OC+RA VL1130GLL-3/4				380	FOCS05100725	
2.1	OC VL1130GLL-3/4	5,0	9,5	6,2	280	FOCS05100725	
2.2	RA R1130	5,8	9,5	0,8	100	FRAN06100825	

### OCCHIELLI STANDARD FERRO



### STANDARD EYELETS STEEL



### OUILLETS STANDARD ACIER

1.0 Occhiello + rondella / Eyelet + washer /  
Oeillet + rondelle (OC+RA)

2.1 Occhiello / eyelet / oeillet (OC)

2.2 Rondella / Washer / Rondelle (RA)

		D (mm)	T (mm)	H (mm)	W (g)	COD.	Note
1.0	OC+RA VL1140GC 1/4				450	FVSN06120525	
2.1	OC VL1140GC -1/4	6,1	11,5	4,0	280	FOCS06120525	
2.2	RA R1140	6,8	11,8	0,8	170	FRAN07120825	

		D (mm)	T (mm)	H (mm)	W (g)	COD.	Note
1.0	OC+RA VL1140				500	FVSN 06120625	
2.1	OC VL1140	6,1	11,5	5,5	330	FOCS06120625	
2.2	RA R1140	6,8	11,8	0,8	170	FRAN07120825	

		D (mm)	T (mm)	H (mm)	W (g)	COD.	Note
1.0	OC+RA VL1140GLL -3/4				530	FVSN 06120725	
2.1	OC VL1140GLL -3/4	6,1	11,5	6,6	360	FOCS06120725	
2.2	RA R1140	6,8	11,8	0,8	170	FRAN07120825	

		D (mm)	T (mm)	H (mm)	W (g)	COD.	Note
1.0	OC+RA VL21				650	FVSN07130630	
2.1	OC VL21	7,3	13,0	4,9	450	FOCS07130630	
2.2	RA R21	7,8	13,0	0,9	200	FRAN08130930	

		D (mm)	T (mm)	H (mm)	W (g)	COD.	Note
1.0	OC+RA VL30				660	FVSN08150530	
2.1	OC VL30	8,0	14,3	4,9	430	FOCS08150530	
2.2	RA R30	8,3	14,6	0,8	230	FRAN09150830	

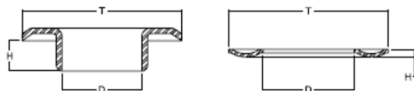
		D (mm)	T (mm)	H (mm)	W (g)	COD.	Note
1.0	OC+RA VL40				1000	FVSN 0180630	
2.1	OC VL40	9,8	17,6	4,7	650	FOCS10180630	
2.2	RA R40	10,8	17,7	1,1	350	FRAN11181230	

		D (mm)	T (mm)	H (mm)	W (g)	COD.	Note
1.0	OC+RA VL40GL H7				1280	FVSN 0180830	
2.1	OC VL40GL H7	9,8	17,6	6,4	930	FOCS10180830	
2.2	RA R40	10,8	17,7	1,1	350	FRAN11181230	

### OCCHIELLI STANDARD FERRO



### STANDARD EYELETS STEEL



### OEILLETS STANDARD ACIER

- 1.0 Occhiello + rondella / Eyelet + washer / Oeillet + rondelle (OC+RA)
- 2.1 Occhiello / eyelet / oeillet (OC)
- 2.2 Rondella / Washer / Rondelle (RA)

		D (mm)	T (mm)	H (mm)	W (g)	COD.	Note
1.0	OC+RA VL40GLL H9				1570	FVSN10181030	
2.1	OC VL40GLL H9	9,8	17,6	8,3	1220	FOCS10181030	
2.2	RA R40	10,8	17,7	1,1	350	FRAN11181230	

		D (mm)	T (mm)	H (mm)	W (g)	COD.	Note
1.0	OC+RA VL50				1540	FVSN12220830	
2.1	OC VL50	12,4	21,6	6,0	960	FOCS12220830	
2.2	RA R50	13,5	21,8	1,0	580	FRAN14221225	

		D (mm)	T (mm)	H (mm)	W (g)	COD.	Note
1.0	OC+RA VL60				2200	FVSN13040730	
2.1	OC VL60	14,1	23,5	6,4	1300	FOCS13040730	
2.2	RA R60	15,7	23,9	1,3	920	FRAN16241425	

		D (mm)	T (mm)	H (mm)	W (g)	COD.	Note
1.0	OC+RA VL70				3700	FVSN15290940	
2.1	OC VL70	15,5	29,0	7,9	2550	FOCS15290940	
2.2	RA R70	17,3	29,0	1,5	1150	FRAN18291940	

		D (mm)	T (mm)	H (mm)	W (g)	COD.	Note
1.0	OC+RA VL80				5500	FVSN18341040	
2.1	OC VL80	19,0	33,7	7,6	3300	FOCS18341040	
2.2	RA R80	22,0	34,0	1,5	2200	FRAN22341940	

		D (mm)	T (mm)	H (mm)	W (g)	COD.	Note
1.0	OC+RA VL150				17900	FVSN41621350	
2.1	OC VL150	41,0	61,5	12,0	12300	FOCS41621350	
2.2	RA R150	44,0	61,0	1,3	5600	FRAN44611950	

		D (mm)	T (mm)	H (mm)	W (g)	COD.	Note
1.0	OC+RA TIR				14300	FVTN416111250	 dimensioni <u>non</u> reali
2.1	OC TIR	42X22	61X41	9,5	8900	FOCT416111250	
2.2	RA TIR	44X23	41X61	3,1	5400	FRTN446113150	