

**OCCHIELLI STANDARD
 ALLUMINIO MONTAGGIO
 MANUALE E SEMI-
 AUTOMATICO**



**STANDARD ALUMINUM
 EYELETS MANUAL AND
 SEMI-AUTOMATIC
 ASSEMBLY**

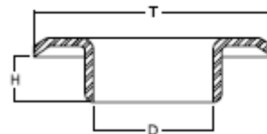
**OUILLETS EN
 ALUMINIUM STANDARD
 ENSEMBLE MANUEL ET
 SEMI-AUTOMATIQUE**



Edizione 2020

Composizione articoli / item composition

1.0	Occhiello + rondella / Eyelet + washer Oeillet + Rondella (OC+RA)
2.1	Occhiello / eyelet / Oeillet (OC)
2.2	Rondella / washer / Rondelle (RA)



2.1



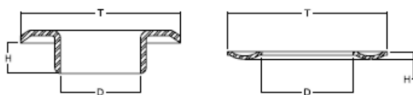
2.2

DIMENSIONI / SIZES / DIMENSIONS: mm

PESO / WEIGHT / POIDS: gr / 1000 pcs ("W" indica il peso nominale, il peso reale può essere differente / "W" stays for the standard weight; the real weight can be different / «W» indique le poids nominal, le poids réel peut être différent.

MATERIALE / MATERIAL / MATERIAL: Ottone – brass – laiton (Pb < 90ppm)

**OCCHIELLI STANDARD ALLUMINIO MONTAGGIO MANUALE E SEMI-AUTOMATICO
 – STANDARD ALUMINUM EYELETS MANUAL AND SEMI-AUTOMATIC ASSEMBLY –
 OEILLETTS EN ALUMINIUM STANDARD ENSEMBLE MANUEL ET SEMI-AUTOMATIQUE**



1.0 Occhiello + rondella / Eyelet + washer /
 Oeillet + rondelle (OC+RA)

2.1 Occhiello / eyelet / oeillet (OC)

2.2 Rondella / Washer / Rondelle (RA)

		D (mm)	T (mm)	H (mm)	W (g)	COD.	Note
1.0	OC + RA VL21				230	AVSN07130630	
2.1	OC VL21	6,8	13,0	5,3	155	AOCS07130630	
2.2	RA R21	7,8	15,0	1,0	75	ARAN08151030	

		D (mm)	T (mm)	H (mm)	W (g)	COD.	Note
1.0	OC + RA VL30				295	AVSN08150530	
2.1	OC VL30	7,8	14,5	4,0	165	AOCS08150530	
2.2	RA R30	8,8	15,0	1,0	130	ARAN09151030	

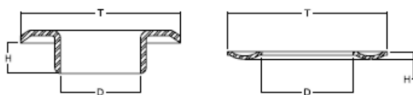
		D (mm)	T (mm)	H (mm)	W (g)	COD.	Note
1.0	OC + RA VL40				365	AVSN09180630	
2.1	OC VL40	9,0	18,0	4,5	230	AOCS09180630	
2.2	RA R40	10,5	18,0	1,2	135	ARAN11181230	

		D (mm)	T (mm)	H (mm)	W (g)	COD.	Note
1.0	OC + RA VL40 PESANTE				545	AVSN09180650	
2.1	OC VL40 PESANTE	9,0	18,0	4,5	410	AOCS09180650	
2.2	RA R40	10,5	18,0	1,2	135	ARAN11181230	

		D (mm)	T (mm)	H (mm)	W (g)	COD.	Note
1.0	OC + RA VL50				690	AVSN11220740	
2.1	OC VL50	11,3	22,0	5,5	490	AOCS11220740	
2.2	RA R50	13,7	22,0	1,4	200	ARAN14221430	

		D (mm)	T (mm)	H (mm)	W (g)	COD.	Note
1.0	OC + RA VL50 PESANTE				820	AVSN11220850	
2.1	OC VL50 PESANTE	11,8	21,8	6,0	620	AOCS11220850	
2.2	RA R50	13,7	22,0	1,4	200	ARAN14221430	

**OCCHIELLI STANDARD ALLUMINIO MONTAGGIO MANUALE E SEMI-AUTOMATICO
 – STANDARD ALUMINUM EYELETS MANUAL AND SEMI-AUTOMATIC ASSEMBLY –
 OEILLETTS EN ALUMINIUM STANDARD ENSEMBLE MANUEL ET SEMI-AUTOMATIQUE**



1.0 Occhiello + rondella / Eyelet + washer /
 Oeillet + rondelle (OC+RA)

2.1 Occhiello / eyelet / oeillet (OC)

2.2 Rondella / Washer / Rondelle (RA)

		D (mm)	T (mm)	H (mm)	W (g)	COD.	Note
1.0	OC + RA VL60				1040	AVSN13240850	
2.1	OC VL60	13,4	23,6	6,2	720	AOCS13240850	
2.2	RA R60	15,5	24,0	1,4	320	ARAN16241440	

		D (mm)	T (mm)	H (mm)	W (g)	COD.	Note
1.0	OC + RA VL60 PESANTE				1200	AVSN13240860	
2.1	OC VL60 PESANTE	13,4	23,6	6,2	880	AOCS13240860	
2.2	RA R60	15,5	24,0	1,4	320	ARAN16241440	

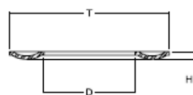
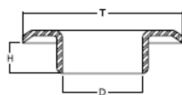
		D (mm)	T (mm)	H (mm)	W (g)	COD.	Note
1.0	OC + RA MH VL70				1830	AVSH14300950	
2.1	OC VL70	14,4	30,0	7,0	1130	AOCS14300950	
2.2	RA R70 MH	17,6	29,0	1,9	700	ARAH18291950	

		D (mm)	T (mm)	H (mm)	W (g)	COD.	Note
1.0	OC + RA MH VL70 PESANTE				2300	AVSH14300970	
2.1	OC VL70 PESANTE	14,4	30,0	7,0	1600	AOCS14300970	
2.2	RA R70 MH	17,6	29,0	1,9	700	ARAH18291950	

		D (mm)	T (mm)	H (mm)	W (g)	COD.	Note
1.0	OC + RA MH VL80				3070	AVSH18341070	
2.1	OC VL80	18,0	33,5	7,7	2020	AOCS18341070	
2.2	RA R80 MH	21,7	34,0	1,9	1050	ARAH22341970	

		D (mm)	T (mm)	H (mm)	W (g)	COD.	Note
1.0	OC + RA VL100				6760	AVSN25491280	
2.1	OC VL100	24,8	49,2	9,0	4240	AOCS25491280	
2.2	RA R100	28,7	49,2	2,8	2520	ARAN29492870	

**OCCHIELLI STANDARD ALLUMINIO MONTAGGIO MANUALE E SEMI-AUTOMATICO
 – STANDARD ALUMINUM EYELETS MANUAL AND SEMI-AUTOMATIC ASSEMBLY –
 OEILLETTS EN ALUMINIUM STANDARD ENSEMBLE MANUEL ET SEMI-AUTOMATIQUE**



1.0 Occhiello + rondella / Eyelet + washer /
 Oeillet + rondelle (OC+RA)

2.1 Occhiello / eyelet / oeillet (OC)

2.2 Rondella / Washer / Rondelle (RA)

		D (mm)	T (mm)	H (mm)	W (g)	COD.	Note
1.0	OC + RA VL150 LEGGERO				9100	AVSN42611360	
2.1	OC VL150 LEGGERO	41,0	61,0	11,3	6400	AOCS42611360	
2.2	RA R150	44,0	61,0	2,2	2700	ARAN44612270	

		D (mm)	T (mm)	H (mm)	W (g)	COD.	Note
1.0	OC + RA VL150				7200	AVSN41611390	
2.1	OC VL150	42,0	61,0	11,3	4500	AOCS41611390	
2.2	RA R150	44,0	61,0	2,2	2700	ARAN44612270	

		D (mm)	T (mm)	H (mm)	W (g)	COD.	Note
1.0	OC + RA MH TIR				8220	AVTH40611360	
2.1	OC TIR	39,8X20	61,2X41,4	8,5	5320	AOCTS40611360	
2.2	RA TIR MH	43,5X24	61X41,2	3,6	2900	ARTH44613670	